



**HABERMANN AURUM
PUMPEN**

APPLICATION MINING & MINERAL PROCESSING

ADVANCED PUMPING
SOLUTIONS FOR MINING
PROCESSING OF MINERALS

www.habermann-aurum-pumpen.de



WATER
MANAGEMENT

MINERALS
EXTRACTION

CHEMICAL
PROCESSING

FILTER PRESS
LOADING

SEPARATION
PROCESS

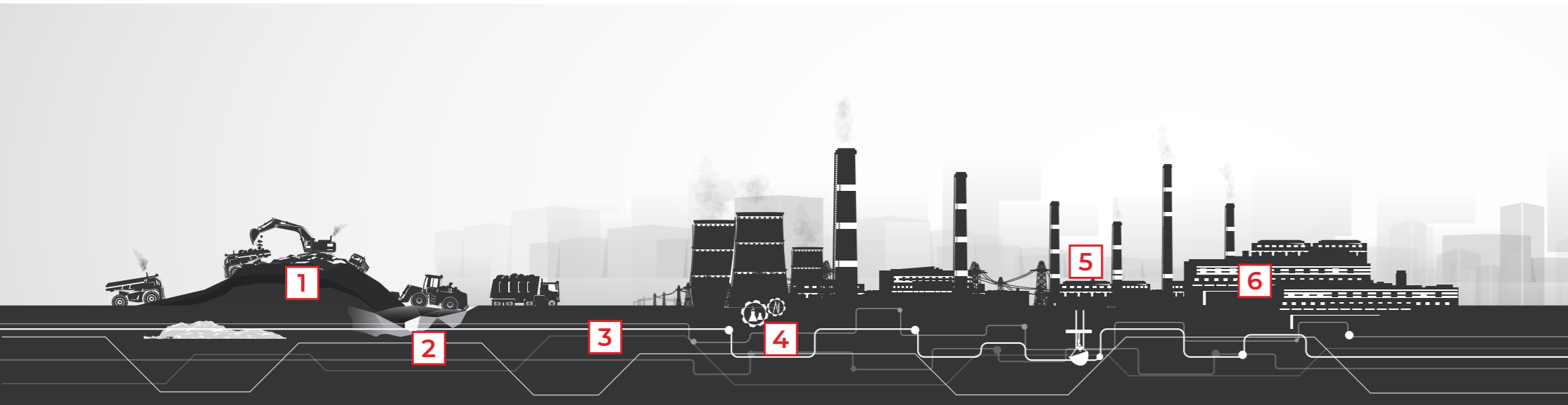
ORE
PROCESSING

Mineral processing & Mining.

The modern mining sector faces formidable challenges from productivity to profitability. Mechanical wear and tear, improper equipment selection, and operational errors lead to costly downtimes. However, with the correct selection of pumping equipment, these issues can be anticipated and mitigated.

Habermann Aurum Pumps delivers robust solutions for the extraction and processing of minerals, designed to endure even the most abrasive applications and ensure reliable performance in the toughest mining environments. Continuous operation under harsh conditions cause

mechanical components to wear out faster, but with correct equipment, you can ensure durability and efficiency and can plan the next maintenance. Depending on the challenges at each stage we have developed a suitable solution for every mining process.



Processes & Challenges

	HPK	KBKM	NPK	CRM & HS	V-series	N-series	Apollon®
1 MINERAL & ORE EXTRACTION		■	■				
2 MINES & QUARRY DEWATERING				■	■		■
3 ORE & MINERAL PROCESSING	■	■	■				
4 CHEMICAL PROCESSING	■				■		
5 SEPARATION FILTER PRESS HYDROCYCLONE	■		■				
6 FROTH FLOTATION FLOTATION PLANT					■	■	

Read more about mining application



Pumping solutions.

With the right pumping equipment selection, many failures will not occur or can be well predicted, so that mining operators do not face unexpected surprises.

HPK pumps with elastic lining

The HPK-series with elastic lining of all inner parts exposed to the slurry are ideal for handling reagents and chemical slurries as well as abrasive fine graded media. They are resistant to chemical corrosion and capable of handling a wide range of fluid viscosities and densities.

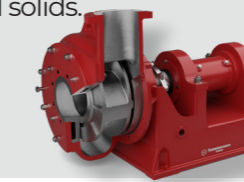
HPK with polyurethane inlines APFlex®



Heavy-duty KB-series pumps

The metallic centrifugal slurry pumps are the best fitting designs for the toughest, high-wear applications. They are fabricated from wear-resistant high chrome steel and specially designed to handle abrasive slurries with highly coarse-grained solids.

KBKM-series dredger pump



NPK-series made of highly wear-resistant cast materials

NPK pumps are designed to handle abrasive and corrosive slurries, ensuring the continuous flow. The practical design of the casing walls, wear plates & impeller is guaranteed to withstand extreme operating conditions with high head rates and coarse-grained solids.

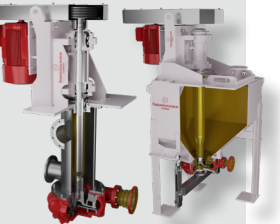
Heavy-duty NPK-series



Froth handling with vertical pumps

Our froth pumps are created to pump foaming & frothy slurry, fluids with air inclusions or with high viscosity. They are mainly used in separation processes like froth flotation. NPK and HPK hydraulics are used in these type of pump construction.

V330 & N-series



Vertical pumps integrated in a container

Our special solution is an installation of a roll-off container with the inlet pipes, in which the pumped surface water is collected. Pumps are installed on the platform and operated mutually redundantly, therefore facilitating trouble-free operation.

Container solution with V-series pumps



Vertical semi-submersible pumps for wet installations

The V300 and V320 models are vertical, semi-submersible, seal-less pumps designed for immersion depths of up to 1800 mm. The pump's design allows it to utilize the same hydraulic components as the HPK, NPK and NPW models.

V300/V320-series



Submersible pumps Apollon®

Apollon® range includes drainage, sewage & slurry pumps. The use of wear-resistant components, e.g. high-chrome impeller treated with the special technology, enables to achieve optimal service life even when working with highly abrasive media.

APNO | CUTARGO MAXIFLOW | ELEVARO

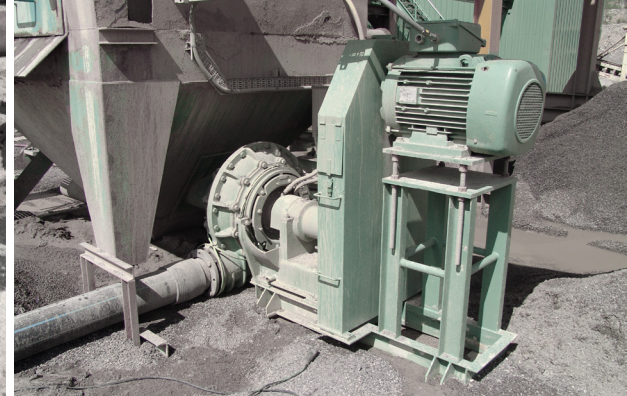


Submersible pumps CRM & HS for processing solids

Challenger® & Heracles® designs are robust, exceptionally reliable pumps with flanged submersible motor for wet installations. Designs of NPK & KB series are used for the construction of these wear-resistant pumps. They are suitable for use with neutral, alkaline & lightly acidic media.

Heracles® (HS-series) Challenger® (CRM-series)





PUMPS | VALVES | DREDGERS | ENGINEERING

Explore Habermann Aurum Pumpen GmbH, the traditional German manufacturer with 100 years of comprehensive expertise in standard and custom pump solutions for mining and minerals processing. Benefit from our on-site support and 24/7 online assistance.

Habermann Aurum Pumpen GmbH

Harpener Heide 14
44805 Bochum | GERMANY
info@aurumpumpen.de
www.habermann-aurum-pumpen.de
V. 08.2024



Europe.
America.
Middle East.
CIS countries.
Germany.